



Ethernet Extender



FEATURES

- **No configuration, one simple two position switch**
- **Transparent to network protocols**
- **Protocol independent**
- **Uses either one or two phone wire pairs**
- **10/100BaseT Auto-Negotiation, auto-MDI/MDIX**
- **Span distances up to 1900 meters/6000 feet**
- **Self-configures from 1 Mbps to 50 Mbps depending upon cable characteristics**
- **Available with option DIN rail mount**
- **Powered by 12 VDC from a 120 to 240 VAC supply**
- **LEDs indicate available speed**
- **Industrial aluminum case, -20C to 60C operation**

DESCRIPTION

The Ethernet-Extender extends 10/100 BaseTX ethernet circuits up to 6,000 feet. The Ethernet-Extender uses copper wire pairs, either a single pair or for more speed, two pairs in combination. Speeds are automatically maximized by the unit on power up, and range from 1 to 50 Mbps.

Now you can utilize older RS-232 or telco wiring to extend your Ethernet LAN throughout the facility.

The Ethernet-Extender is used in pairs (and sold in pairs). The only configuration is to set a single switch, indicating that one unit is the remote and one is the local. That's all there is to it.

Power input is 12VDC supplied by the included 120-240 VAC power supply. Other power supply options are available.

Ethernet Extender

SPECIFICATIONS

General

- Symmetrical VDSL over the extension port
- Standards: IEEE802.3 10BaseT, IEEE802.3u 100Base-TX, IEEE802.3x, Ethernet over VDSL
- Protocols: Transparent to all higher layer protocols
- Processing Type: Half-duplex back-pressure and IEEE802.3x Full-duplex flow control

Indicators

Power

4 link speed LEDS indicate 1Mbps to 50 Mbps operation

Controls

DIP switch to set local or remote

Connectors

RJ11 for 1 or 2 pair unit to unit link

RJ45 for 10/100BaseT Ethernet, half/full duplex, MDI/MDIX

Physical/Electrical/Environmental

3 1/4" x 4 1/2" x 1"

one pound

-20 to +60 C

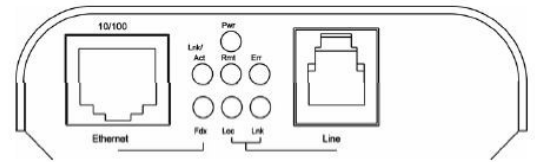
<95% non-condensing relative humidity

12 volt DC power supplied by external 120-240

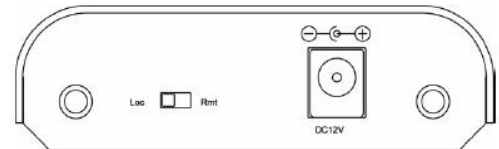
VAC power supply

24, 48, 125 VDC and 240 VAC power options available

220 mA at 12 volts, 2.4 watts max.

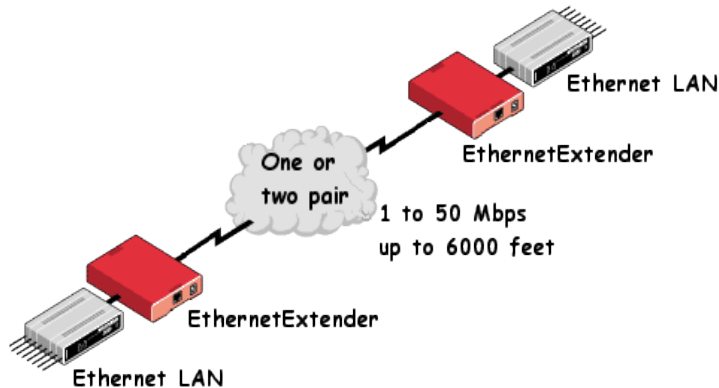


Front view



Rear View

APPLICATION



Data Comm for Business, Inc.

2949 CR 1000 E

Dewey, IL 61840

Voice 8004DCBNET

(800.432.2638)

Fax 217.897.1331

Info www.dcbnet.com/contact.html

Web <http://www.dcbnet.com>